



Petone Perfection

Design Builders Wellington Showhome

239 The Esplanade, Petone
Open Saturdays and Sundays 1 - 4 pm or by
appointment.



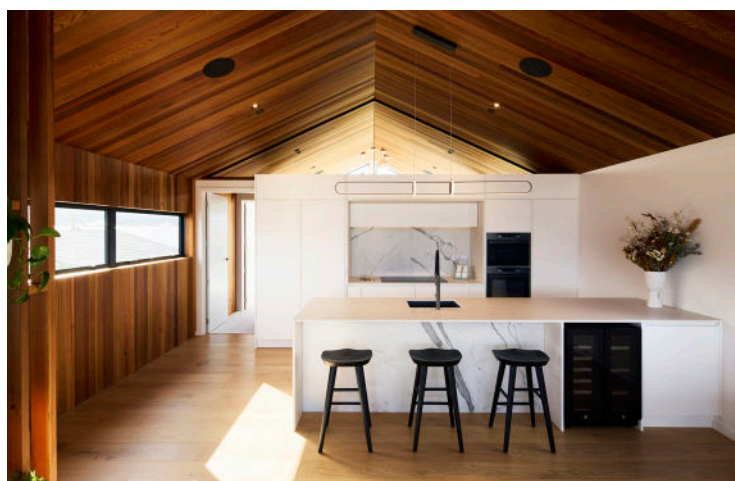
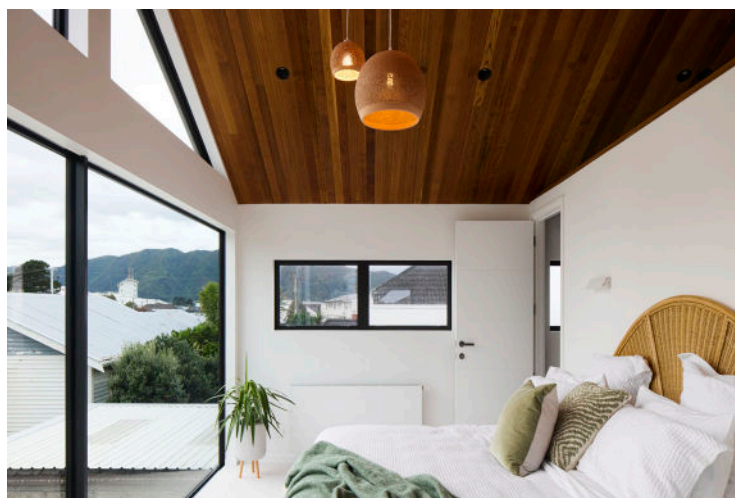
House Area 180m²

Garage Area 37.8m²

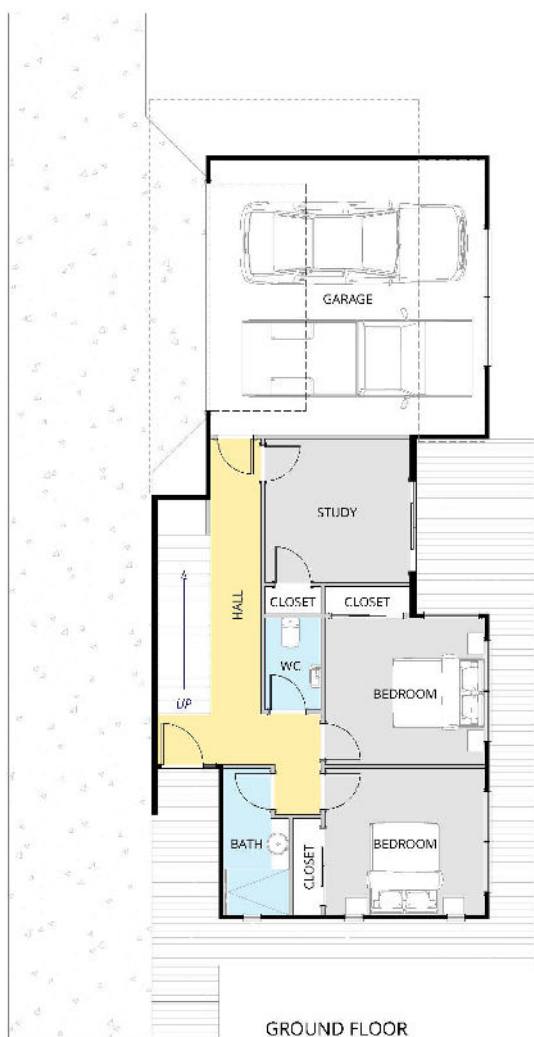
A guide to fittings, fixtures and features

The products which help us make this showhome so special are provided by our partners and suppliers, so if you want to know who did what, here's your handy guide.

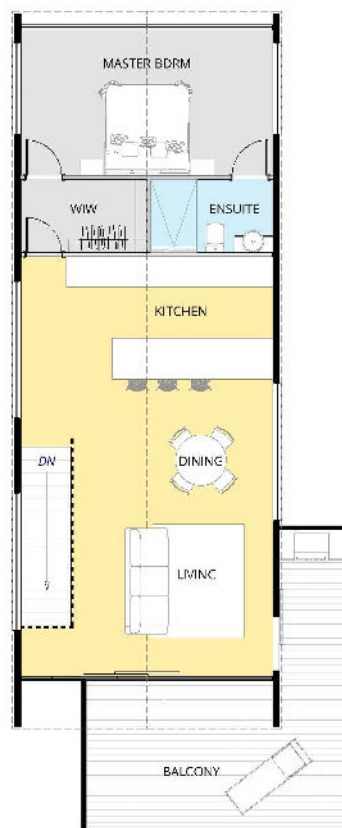
For further information, please contact Mark from Design Builders Wellington on 027 462 7220 or by email at mark.davidge@designbuilders.co.nz



DESIGN BUILDERS



GROUND FLOOR



FIRST FLOOR



Total Area 180 m²

Spectacular views across Wellington Harbour are a feature of this capital home.

Alpine tray cladding on sides and roof, with touches of concrete-style plaster to the lower storey, add visual panache.

The cantilevered master bedroom and grand double-high entry staircase heighten the design flair. There's a high level of finish and attention to detail throughout.

Kitchen

Kitchen, Island benchtops: 20mm Dekton Zenith Porcelain

Cabinetry cupboards: Blum Antaro Drawers with integrated soft close

Sinks: Blanco Subline 500 Compost, Rock Grey

Lighting: Switch lighting

Kitchen Mixer: Liano II Pull Down Sink Mixer with Dual Spray - Gunmetal

Appliances: Archant

Kitchen Splashback: Stauario Supremo Satin 1200 x 2780

Pantry: Pull out pantry, blum space tower with 5 internal Legrabox drawers

Interior linings

Ceiling: Cedar Ceilings, HP808

Heating: Custom Radiators, Heating NZ

Feature wall linings: Cedar 90 x 45 feature wall

Tiling: Tile Space, all large format 2700x1200

Carpet: Bremworth Charmeuse, Imperio Uniclic

Stairway: American Oak, solid 45mm, custom, stained to match Imperio.

Wardrobe and Laundry fit out: Mastercraft Kitchens



Bathrooms

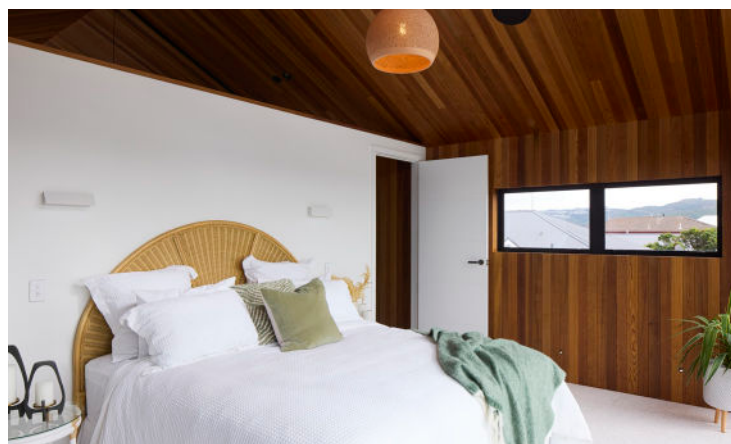
Tapware: Urbane II range

Shower systems: Urbane II range in gunmetal

Toilets: Urbane II, Invisi Series in gunmetal

Upstairs shower: Tile Space, Amazonite Polish 120 x 270

Downstairs shower: Tile Space, Marvel Atlantis Matt XL 120 x 270



Exterior Works

Roof: Powder coated Aluminium

Wall cladding: Resene Construction Systems, xtherm blue, Cerano finish. QBT450 tray.

Hempac: HP808 Cedar soffits

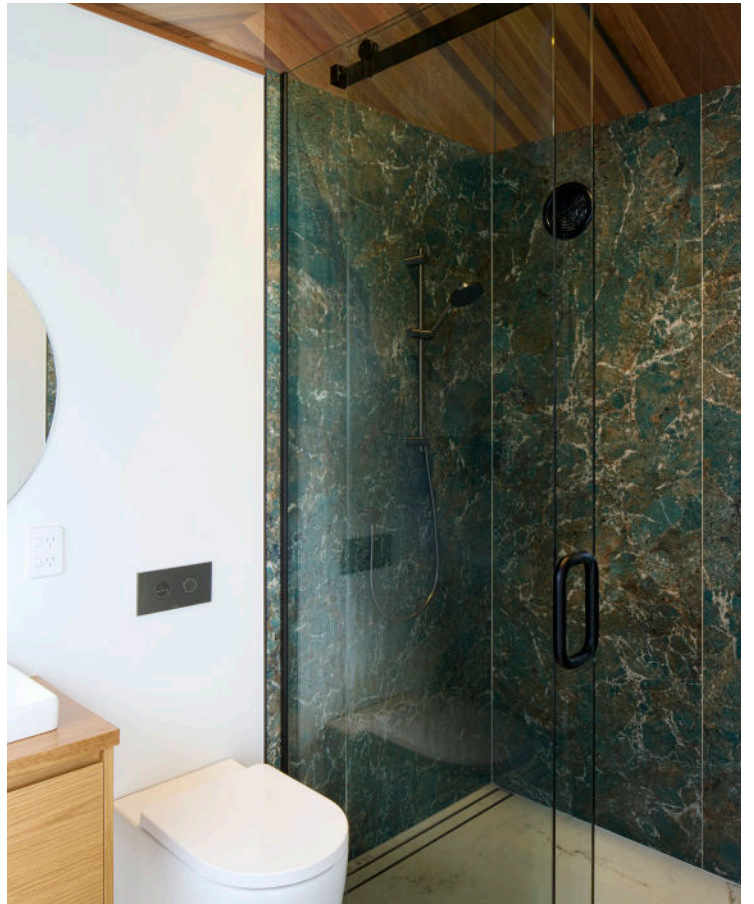
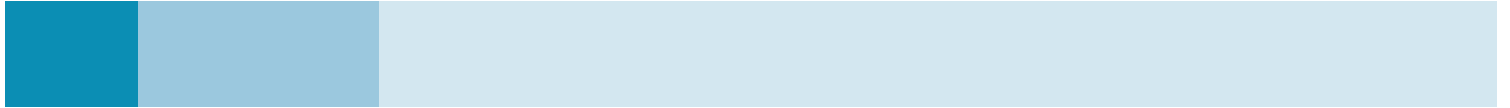
Exterior Decking: Vitex

Glass Balustrade: Clear sentry laminated channel fixed balustrade

Spouting: Custom aluminium box spouting

Exterior Lighting: Switch lighting





DESIGN BUILDERS

A home built *around you*